

Rodent Control

Manual and Record Book for Farms



Farm Name:

Date:

Enabling the most effective solutions to your pest problems.

 **BASF**
We create chemistry

Developing an Integrated Rodent Strategy

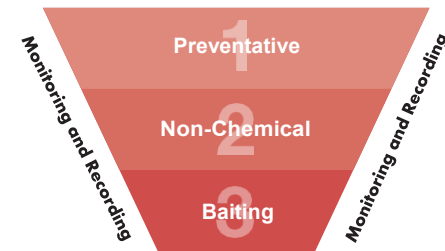
This book has been designed to help you plan and organise your rodent control procedures whilst keeping a record of your activities.

Good record-keeping is important if you are to...

- Comply with food and farm quality assurance schemes.
- Apply the appropriate treatment to the given situation.
- Ensure the most effective bait point siting.
- Maintain consistent bait replenishment.
- Monitor the success of treatments.
- Demonstrate sufficient wildlife responsibility.

Any good rodent control plan should constantly go through 3 stages: **Preventative**, **Non-Chemical** solutions and **Baiting**.

By eliminating key rat and mouse necessities such as food and harbourage and constantly searching for rodent activity your control strategy becomes easier to manage and makes infestations more preventable.



Prevent

Integrated Rodent Management (IRM) is a proactive process that should provide safe, effective, economical and sustainable long-term management strategy within a local environment.

Integrated Rodent Management should focus on:

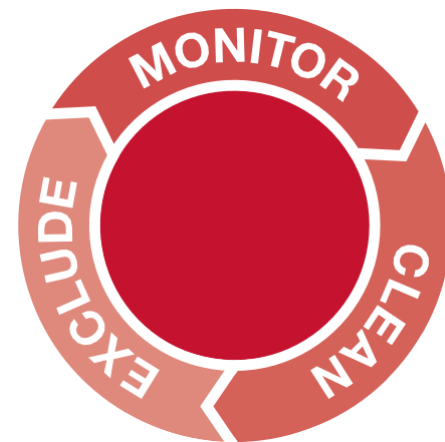
- Continual/frequent monitoring for rodent activity around the site.
- Management of local environmental conditions to exclude and reduce rodent activity.
- The potential for, or level of any actual rat or mouse activity.
- Training and awareness of those who may be involved with or affected by rodent activity.
- Consideration and application of effective and environmentally responsible control techniques.
- Complete record keeping documents.

The primary aim is to try to avoid an infestation and to identify early signs that rats or mice have become active. Once established, rats and mice can be difficult to eradicate.

Rodent infestations require:

- Food.
- Water (less important for house mice).
- Harbourage (somewhere to live and nest).

If any of these factors are not present or have low availability, the site is less likely to attract or sustain a rodent infestation.

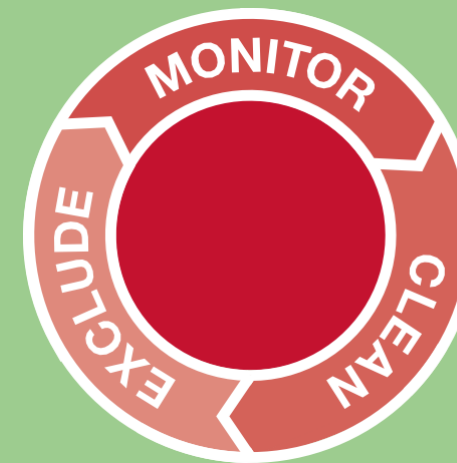


ERADICATION CAMPAIGN

If an infestation has been identified, consider and eliminate the different control options available, taking care not to adversely affect the surrounding environment and non-target species.

Control Risk Hierarchy

Prevention
Is always preferable to control



Integrated Rodent Management

Control
If activity is found or reported

Non-Chemical: Lethal

Alternatives

First Generation Anticoagulants (FGARs)

Second Generation Anticoagulants (SGARs)

PREVENTATIVE



Hygiene Issues – Minimise rodent access to alternative food sources

- Store grain and feed in secure areas behind closed doors.
 - Block up any obvious rodent access points.
 - Fit metal strips to the base of gnawed wooden doors.
 - Clear-up all spilled grain and feed.
- Readily-available alternative food access can seriously restrict bait uptake.*

NON-CHEMICAL



- Traps are an important part of an Integrated Rodent Strategy and they come in different shapes, sizes, and types. They can also be used to help to identify the pest problem and for quick knock down of populations or problem rats and mice. Please always refer to user guidelines for the use and checking of traps.
- Non toxic monitoring baits – for use to identify hotspots, re-invasion and presence of rats or mice without using chemical baits. Non toxic baits can be used to immediately identify activity so they can then be substituted with a chemical bait for your eradication campaign.

BAITING



1st Generation baits (for rats)
Acutes (for mice)
Gassing (for rats) away from buildings
Second Generation Anticoagulants (SGARs) – (for rats and mice) in and around buildings

Place baiting points whenever you spot signs of rodent activity

- Along rat runs beside walls between living and feeding areas.
- Where tell-tale droppings, gnawing, footprints, smears are evident.
- In holes and burrows (if applicable in your country).
- Extending beyond obvious hot spots to ensure full farmstead control.
- The more the better, especially with mouse infestations.

To overcome rat neophobia site baiting points several days before putting out the bait.

Eradicate activity quickly and efficiently. Remove all baits at the end of a campaign and search for bodies.



Responsible Farm Rodent Planning – Outside



- 1** Remove rubbish and clean-up site, to prevent areas for rats to live in and move around under.



- 2** Prevent rodent ingress under doors. Fix kicker plates, re-hang door or change the floor – just keep them out!



- 3** Cut back vegetation close to a building to remove cover for rodents to migrate from one place to another and around buildings.



- 4** All spilt food should be cleaned up immediately after it occurs. This is an alternative food source to your rodenticides and will effect how quickly you get bait take and therefore control.



- 5** Burrow bait where obvious active rat burrows appear. Use Neosorex[®] Gold or Neosorex[®] Bait Blocks directly into hole and then heel in soil to cover bait (if applicable in your country). Check bait daily.



- 6** Where evidence of rat activity is found use either Neosorex[®] Gold or a secureable product such as Neosorex[®] Pasta or Bait blocks. Always cover bait and protect from non target species. You may use suitable materials on site or the Roguard bait station or Wide Piper offer more secured bait points where necessary.

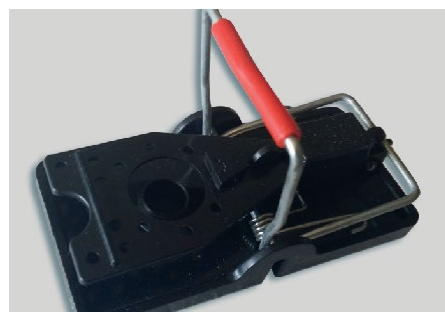
Responsible Farm Rodent Planning – Inside



- 1** Ensure all food rubbish is removed from site (for example: discarded boxes and containers, over spill from rubbish bins, discarded animal feed bags etc).



- 2** Spilt food and nesting material must be frequently removed to reduce possible activity becoming established.



- 3** For quick results start mouse control using snap traps.

For 100% control the use of rodenticides may be required.



- 4** Signs such as heavy smear marks over the containers and bags, along with packaging damage on the cardboard boxes clearly show high mouse activity in the area.



- 5** Mouse droppings found on stored items should be cleared away to allow ongoing monitoring.



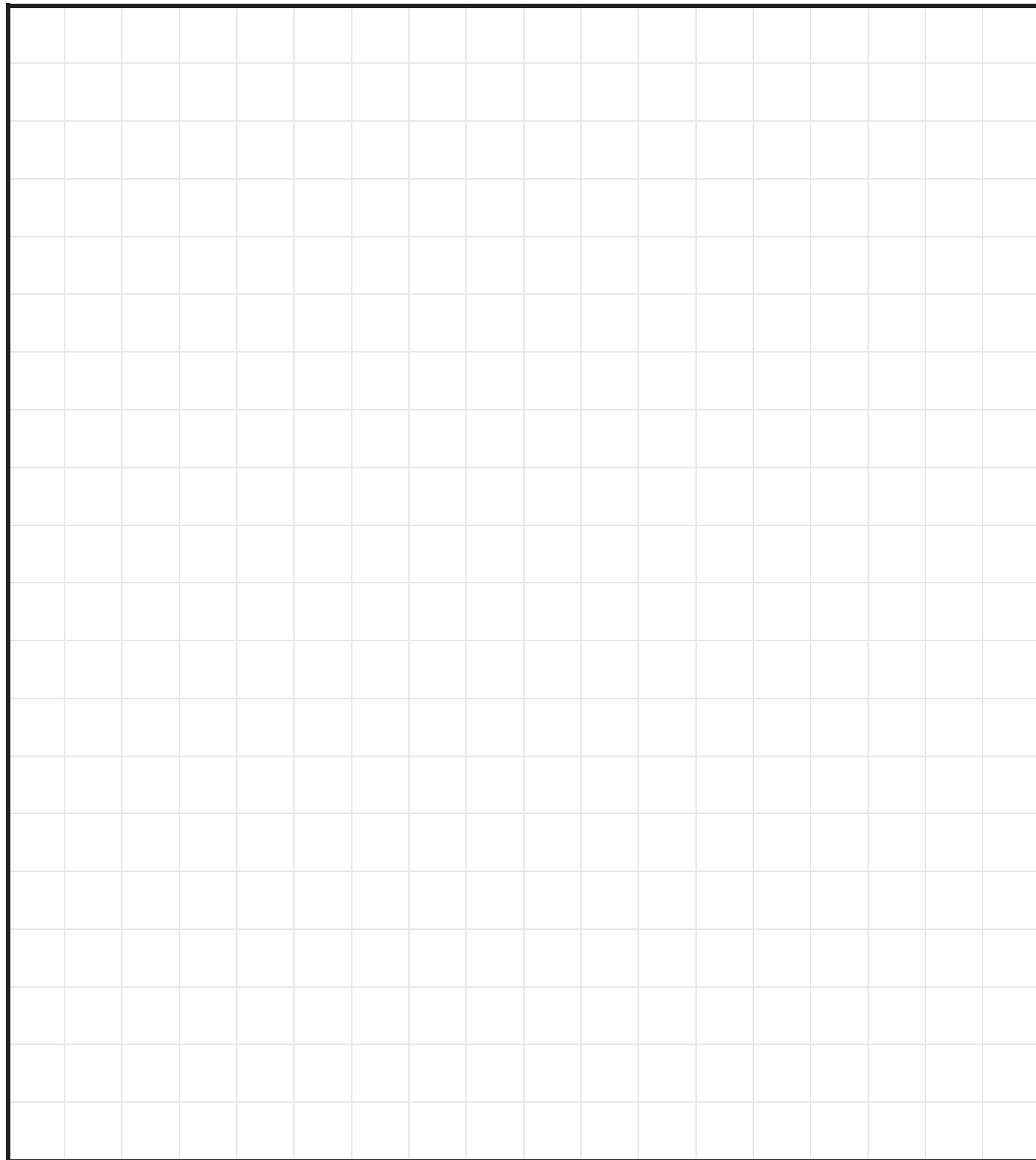
- 6** Where evidence of mouse activity is found place Sorex[®] D or Storm[®] baits in a secure baiting station and inspect in accordance with the product label.

Record Keeping And Due Diligence

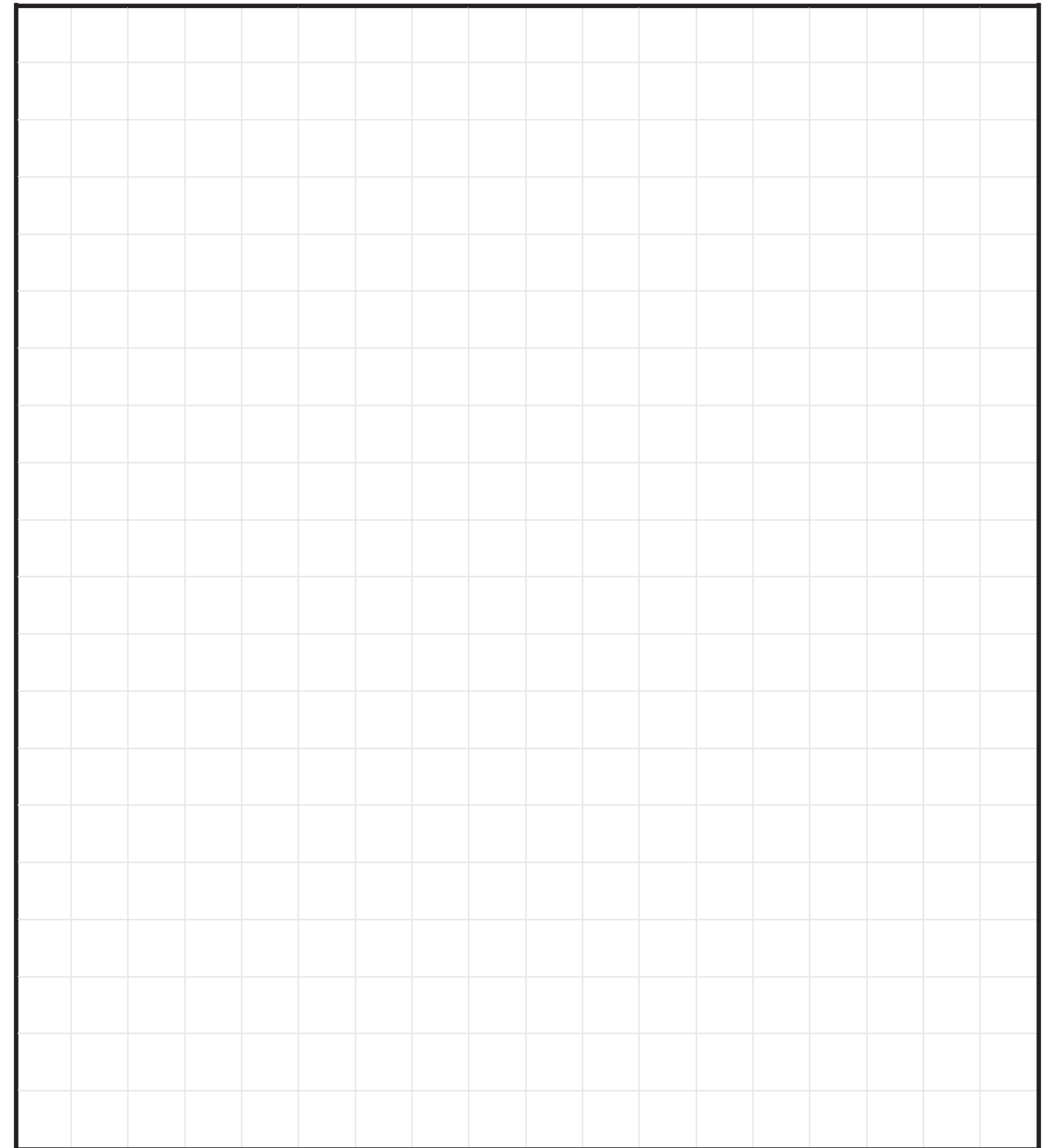
Area Key	Building 	Door/Gate 	Livestock 	Feed storage 	Water 	Wetland 	Path 	Stack (straw/hay)
Rodent Key	Rodent burrow 	Bait station 	Rat activity 	Mouse activity 	Rodent entry point 	Non-target activity 		

Draw on here your outdoor and indoor areas for rodent control. Highlight key areas of activity and where you plan to use bait stations for your eradication campaign. Number your bait stations/traps on the diagram for the table overleaf. Also mark where any specific non-target species activity is seen and special care is needed.

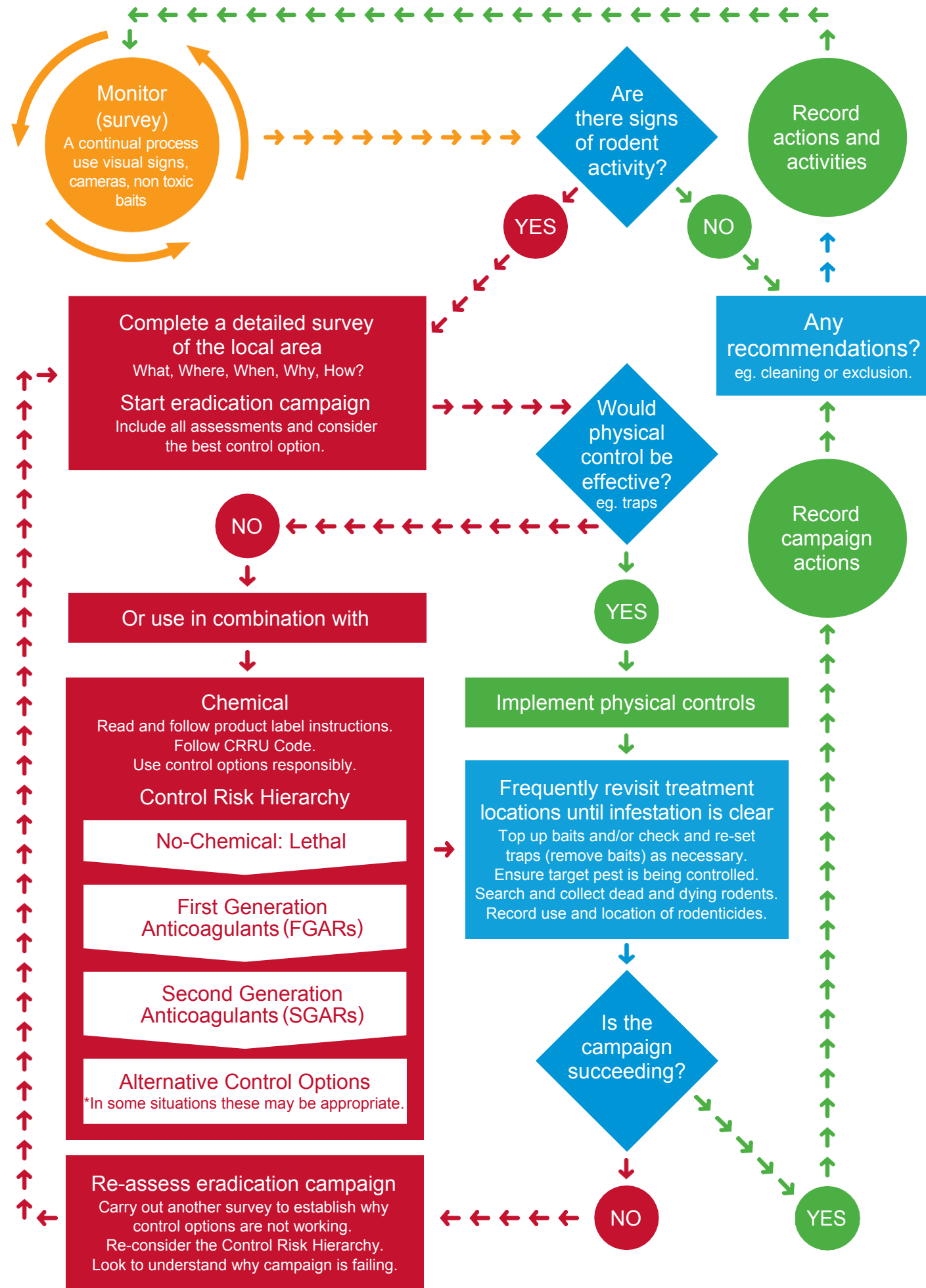
Your Outdoor Farm Plan



Your Indoor Plan



Action Plan



Rodent Eradication Campaign

Campaign 1

Start Date: DD/MM/YYYY

Name of responsible person(s):

No.	Location	Product Type	Pest Type	Start Date	Total Quantity (g/bait point)	Second Application	Third Application	Total Quantity (g/bait point)	Final Application	Quantity (g/bait point)
	Barn Door	Neosorex Gold	Rats	10/5/17	200g	15/10/17	20/10/17	100g	25/10/17	0g

Campaign 2

Start Date: DD/MM/YYYY

Name of responsible person(s):

No.	Location	Product Type	Pest Type	Start Date	Total Quantity (g/bait point)	Second Application	Total Quantity (g/bait point)	Third Application	Total Quantity (g/bait point)	Final Application	Quantity (g/bait point)
	Barn Door	Neosorexa Gold	Rats	10/5/17	200g	15/10/17	100g	20/10/17	100g	25/10/17	0g

Campaign 3

Start Date: DD/MM/YYYY

Name of responsible person(s):

No.	Location	Product Type	Pest Type	Start Date	Total Quantity (g/bait point)	Second Application	Total Quantity (g/bait point)	Third Application	Total Quantity (g/bait point)	Final Application	Quantity (g/bait point)
	Barn Door	Neosorexa Gold	Rats	10/5/17	200g	15/10/17	100g	20/10/17	100g	25/10/17	0g

Campaign 4

Start Date: DD/MM/YYYY

Name of responsible person(s):

No.	Location	Product Type	Pest Type	Start Date	Total Quantity (g/bait point)	Second Application	Total Quantity (g/bait point)	Third Application	Total Quantity (g/bait point)	Final Application	Quantity (g/bait point)
	Barn Door	Neosorexa Gold	Rats	10/5/17	200g	15/10/17	100g	20/10/17	100g	25/10/17	0g

Campaign 5

Start Date: DD/MM/YYYY

Name of responsible person(s):

No.	Location	Product Type	Pest Type	Start Date	Total Quantity (g/bait point)	Second Application	Total Quantity (g/bait point)	Third Application	Total Quantity (g/bait point)	Final Application	Quantity (g/bait point)
	Barn Door	Neosorexa Gold	Rats	10/5/17	200g	15/10/17	100g	20/10/17	100g	25/10/17	0g

The Best Bait Choices For Your Eradication Campaign

Neosorex[®] Gold

The UK's No1 rat and mouse bait with Fortec technology for increased bait consumption.



- Multi-purpose, cut wheat bait for effective and consistent control.
- Extremely palatable with Fortec technology for increased bait consumption.
- A lethal dose consumed within just one day.
- Proven superior performance to ordinary baits.
- Available as loose bait or 100g sachets.

Containing difenacoum, **Neosorex[®] Gold** is the first rodent bait to use the patented Fortec technology. A mixture of foraging grain pellets and cut wheat means greater palatability and faster control of rats and mice.

What is Fortec?

A major advancement in rodenticide technology to aid modern rodent control. **Fortec** introduces a 'new approach' to rat management, offering more rapid and reliable control by exploiting rats' natural feeding behaviour.



Neosorex[®] Blocks

The most reliable multi feed block bait for rat and mouse control. Provides the best balance of palatability and durability in a highly efficacious block.



Neosorex[®] Pasta Bait

The most reliable multi feed pasta bait for difficult-to-control rats and mice. Provides a moist, rich bait in a highly palatable and attractive formulation.



Sorex[®] D

The ultimate canary seed bait for mouse control. Provides maximum uptake by mice in any situation.



Storm[®] Pasta

The soft block solution for faster all round rat and mouse control.



Storm[®] Mini Bits

The most appetising loose bait alternative.



Storm[®] Secure

The best combination of grain-based palatability, durability and securability.



The premium range of bait stations

Secure bait stations are an important way of minimising the risk of rodenticides to children, pets and other non-target species. Designed with a clear understanding of natural rodent behaviour, **Roguard** bait stations do this while also minimising the extent to which bait boxes restrict the uptake of rodenticides by rats in particular.



Use the Roguard Xtra for the greatest versatility

- Twin feeding chambers equally suited to any bait type – or a rat trap.
- Sufficient space to accommodate more than one rat at a time.
- Strong and robust with tamper-resistant locks and multiple anchorage points.



Use the Roguard Wide Piper for grain baiting simplicity

- Heavy duty, gravity-fed dispenser in a pipe form familiar to rats.
- Designed for all grain baits.
- Clear bait hopper allows rapid visual consumption check.

Areas of use

It is essential to apply rodenticides only in those areas where their use is permitted by the product authorisation and as shown on the product label.

Campaign for Responsible Rodenticide Use

- ✓ Always have a planned approach.
- ✓ Always record quantity of bait used and where it is placed.
- ✓ Always use enough baiting points.
- ✓ Always collect and dispose of rodent bodies.
- ✗ Never leave bait exposed to non-target animals and birds.
- ✗ Never fail to inspect bait regularly.
- ✗ Never leave bait down at the end of the treatment.



Further Information and Support

Visit www.pestcontrol.basf.co.uk for simple pest control knowhow.

Content includes:

- **Advice Notes** on Rodent Baiting in Grain Stores, Rodent Baiting in Maize Silage, Milking Cluster Disinfection and Controlling Mice in Intensive Livestock Units.
- **Storm®** User Guide.
- **Sorgene® 5** User Guide – Disinfectant for livestock and general farm use.
- **Best Practice Dairy Calving Hygiene** Smart Guide.
- **Rodenticide Decider** to help you choose the right rodenticide for your specific situation.

Online technical support:

Think Rat Resource – to help plan control programmes to take the greatest advantage of natural rodent behaviour.

Interactive Video Guides – to help save treatment time through the best control practice in a range of 'real life' situations.

Neosorex®. Sorex®. Storm® and Fortec™ are trademarks of BASF. 2017 Copyright BASF - All rights reserved.
Neosorex® and Sorex® contain difenacoum. Storm® contains flooumafen. Use biocides safely.
Always read the label and product information before use.

Further information via:

BASF SE

Professional and Specialty Solutions
67117 Limburgerhof, Germany

ServiceLand: +49 (0)1805 / 11 56 56

Email: pestinfo@basf.com

www.pestcontrol.basf.co.uk


We create chemistry